

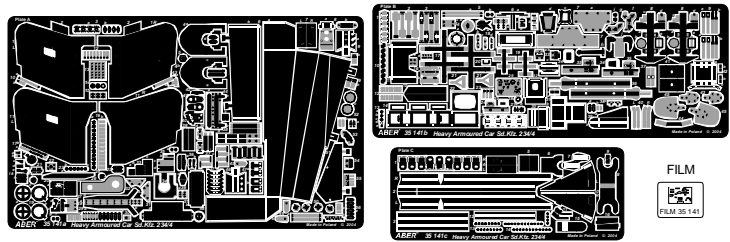
# Heavy Armoured Car with 7,5 cm PaK gun Sd.Kfz. 234/4

Ciężki samochód pancerny

1/35 scale update for Italeri

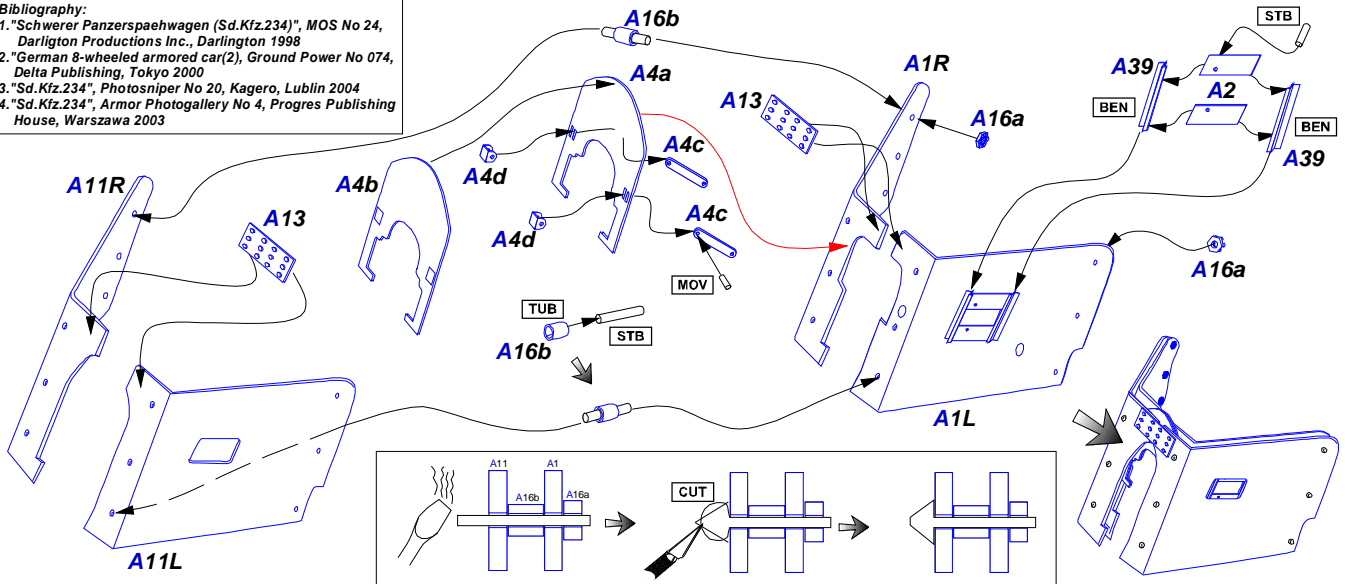
## ABER® 35 141

Made in Poland © 2004



**Bibliography:**

- "Schwerer Panzerspahwagen (Sd.Kfz.234)", MOS No 24, Darlignton Productions Inc., Darlignton 1998
- "German 8-wheeled armored car(2), Ground Power No 074, Delta Publishing, Tokyo 2000
- "Sd. Kfz.234", Photosniper No 20, Kagero, Lublin 2004
- "Sd. Kfz.234", Armor Photogallery No 4, Progres Publishing House, Warszawa 2003



- Separately sold (oddzielnie w sprzedaży):
- 35 142 Visuin ports for Sd.Kfz. 234
  - 35 A30 Side bin doors for Sd.Kfz.234 (Dźwiczki do bocznych schowków)
  - 35 A77 Engine upper deck for Heavy Armoured Car Sd.Kfz. 234 (Górne pokrywy przedziału silnikowego do ciężkiego samochodu pancernego)
  - 35 L-25 German 75 mm Barrel for PaK 40 - late model (Lufa do działka PaK 40)
  - R-20 German with indicators for Sd.Kfz. 234 (Skrainia obrysu)

