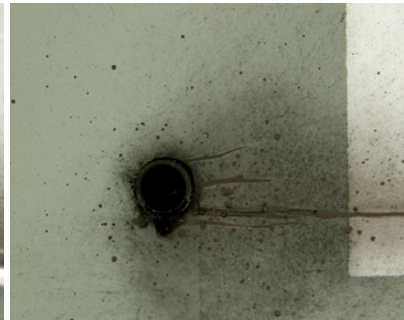
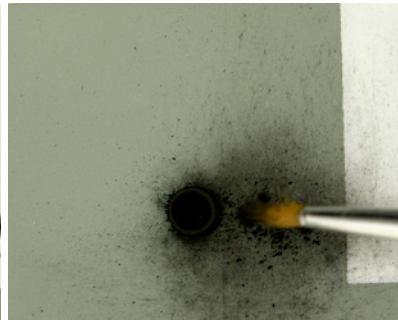




AK 039 BLACK

With pigments we can get different effects depending on the method of application. We can use them to powder dry by applying them directly onto the surface or combine with oil and enamel to achieve other interesting effects. This pigment is ideal for the effect of smoking on escapes, though combined with other pigments can achieve the effect of combustion that produces heat on the metal and paint.



The pigment is applied directly to the surface with a round brush trying to mimic the effect of smoke produced by the exhaust. Once we have finished we will fix with AK011 White spirit.

Pigments applied over the area to create some texture.

In combination with gray and orange pigments we can reproduce the effects of fire on the metal.

We applied the dry pigment in the exhaust in combination with fat and oil to generate streaks under the exhaust.

